

# OFF THE BOARDS AND OFF THE WALLS OF MORIYAMA & TESHIMA

EXHIBITION OF WORK FROM 1958 TO THE PRESENT  
SUNDAY APRIL 4 TO SUNDAY MAY 16, 2010

Japanese Canadian Cultural Centre Gallery

“Off the Boards and Off the Walls” allows us to reflect upon our history and our future through the images and artifacts that reside at 32 Davenport. A selection of these pieces, which for years have been part of the fabric at Moriyama & Teshima, has been integrated with current work to express the spirit of our office: past, present and future.

Though the intent is not to create a distinction between then and now, we carry a strong sense of our heritage and Raymond’s founding principles and values remain etched in our design DNA. From recent competition panels hung in our office lobby, to hand drawn sketches of our earliest projects, we let the continuum of work and objects tell our story.

Defying the constraints of organizational paradigms, we present a body of work from 1958 to the present that collectively communicates our passion for design.



Halfway House

## RAYMOND MORIYAMA

CC, O.Ont, ORS, M.Arch, FRAIC, Int.FRIBA, Hon.FAIA, MCIP, OPPI, RCA, FRSA, LLD, D.Eng, D.Arch hc. - Partner Emeritus

Raymond Moriyama is a hero to many Canadians. His stories of being interned during the Second World War because of his Japanese heritage and his rise to become one of Canada's most respected architects continue to inspire.

On May 1, 1958 Ray set up practice as a sole practitioner on the second floor of a semi-detached house at 71 Yorkville Avenue in Toronto. In 1966 the office moved to its present location at 32 Davenport Road.

Ray has applied his extraordinary vision and understanding to numerous projects including the Bata Shoe Museum, Bank of Montreal Institute for Learning, Saudi Arabia National Museum, Ontario Science Centre, Scarborough Civic Centre, Toronto Reference Library, Canadian Embassy in Tokyo and the Canadian War Museum.

Such highly visible projects consistently earn praise for their attention to the needs and purposes of the people who use them.

## TED TESHIMA

B.Arch., OAA, AIBC, FRAIC, FRSA - Partner Emeritus

Two of the Ray's early projects were published and they caught Ted's attention - the Gatehouse for Crothers Used Equipment facility built of scrap iron and the Halfway House, also designed for the Crother's family. But it was a small house Ray designed for Bill Brady in 1960 that was built near the Scarborough Bluffs that Ted said really brought him in. Ted first worked for Ray as a summer student after his fourth year of studies. Ted became a partner with Moriyama & Teshima in 1970 and retired in 2006. Excerpt from Ted Teshima interview by Norman Jennings.

*"Ted has been such an integral part of the culture of Moriyama and Teshima. In many ways the daily working climate of our office reflects very much Ted and his approach to architecture, to clients, to consultants and to contractors. The spirit of how we approach our work reflects the kind of approach that Ted has in his approach to architecture. He has this amazing quality of listening to everyone."*

Quote from Diarmuid Nash, Partner, Moriyama & Teshima Architects.

*"There are so many wonderful stories I could recount about Ted Teshima from working with him over some 37 years. For me, he will always be distinguished by his humility, his wisdom, his self-less leadership, warm open friendship and especially the brilliance he showed everyone."*

Quote from George Stockton, President Moriyama & Teshima Planners.

## CREDO FOR AN OFFICE

Excerpt from an article that was first published in the February 1967 issue of The Canadian Architect magazine.

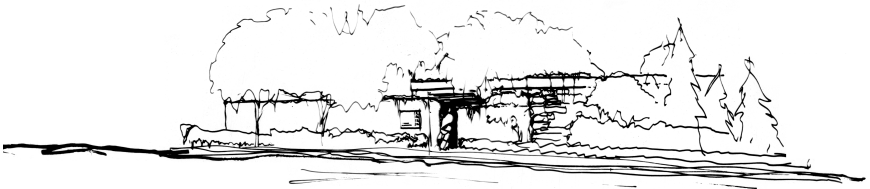


Raymond Moriyama describes his office as a "workshop for the mind", a tool built first to serve the staff, and second to help give the client a rounded view of the firm and its basic attitude. Moriyama, a graduate of the Toronto School of Architecture, and holder of a master's degree in town planning from McGill University, believes that the one ingredient (aside from talent, imagination, vision and sheer physical stamina) that makes the difference between a great creative action and an average creative action, is integrity. This is the ability to "live up to the best in one's self, to have a highly developed sense of honour, to own a conscience and to listen to it, to obey the unenforceable. It is that quality of wholeness of heart, mind and action - no front and back

- fairness in proper perspective - that conveys the courage of one's convictions." It is, says Moriyama, the intangible bridge that translates man's dream into reality. And this is why the quality of his new office is the same back and front; it encourages this sense of integrity, communicates to his staff and, can thus be reflected in their work.

For the remainder of the article see [mtarch.com/mtacredo.html](http://mtarch.com/mtacredo.html).

The Credo is as relevant today as when it was written. Place-making is at its heart - an act of passion: passion for land, nature, site and context; passion for people and experience; and passion for the power and possibilities of design.



Design Sketch of the Moriyama & Teshima office at 32 Davenport Rd.

# CATALOG OF DISPLAYS

Construction Site Sign

Raymond Moriyama's Drawing Seal

Massy Medal for Architecture: Silver Medal, Halfway House

Moriyama & Teshima Ephemera Book

Moriyama and Teshima Office at 32 Davenport Road: Model

Office Through the Years: Photos

Wadi Hanifah: Concept Drawings, Newspaper Article

Canadian Embassy: Drawings, Books, Model

Moriyama & Teshima Monograph 1958-1992

The Goh Ohn Bell: Totem

Sheikh Zayed National Museum Competition: Presentation Boards

Jabal Omar Towers of Makkah Competition: Presentation Boards

Raymond Moriyama and Canadian War Museum Puzzle

Bata Shoe Museum: Drawings, Model

Canadian War Museum: Photos, Models

Japanese Canadian Cultural Centre: Prints, Totem

University of Toronto Multifaith Centre: Photos

Thank you to the following people for their help and support in assembling the Exhibition:

Moriyama & Teshima: Tom Ngo - Curator, Fabian Grieco, Norman Jennings, Ajon Moriyama, Raymond Moriyama, Shahid Mahmood, Christine Ouyed, Elias Saoud, Kathryn Seymour, Pat Viera, Cheryl Wang, Chris Yen.

Japanese Canadian Cultural Centre: Laura Ashley, Constantin Dutescu, Milton Reynolds, Peter Wakayama.

The exhibit has been generously supported by:  
THE JAPANESE CANADIAN CULTURAL CENTRE  
and MORIYAMA & TESHIMA ARCHITECTS  
Exhibit sponsor: CROSSEY ENGINEERING LTD.

